

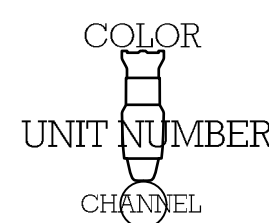
DISCLAIMER

This drawing represents visual concepts, suggested construction and fixture placement only! The Designer is not qualified to determine the structural or electrical appropriateness of this design and will not assume responsibility for improper engineering, construction, handling, or use. All materials and construction must comply with the most stringent applicable federal and local fire, safety energy and environmental codes. This drawing is intended for the mentioned production only any use of this design is forbidden without express written consent of the designer.

FIXTURES

- VL3000 Spot
- 12" Disisti Fresnel 2K
- Altman 6" Fresnel
- Altman Par 64 WFL 1Kw
- Source 4 ParNel 575w
- Source 4 Par WFL 575w
- SeaChanger 26 Deg 750w
- SeaChanger 50 Deg 750w
- Source 4 19 Deg 575w
- Source 4 26 Deg 575w
- Source 4 36 Deg 575w
- Source 4 50 Deg 575w
- Philips iWhite
- Martin Atomic 3K
- ColorBlaze 72
- Philps ColorBlaze 72 12 Channel Mode
- Hui Cyc Light
- Altman MR 16 5 Cell-3 Circuit - 6' 750w
- Black Light Fluorescent
- Ultratec Raidence Hazer

LEGEND



SHOW



RHINOCEROS

By Eugene Ionesco
Adaptation by
Brittney Anderson (Act I)
Emily Wamaker (Act II)
Tamara Wheaton (Act III)



VENUE

The Arts Bank

PRODUCER

UNIVERSITY OF THE Arts

CREATIVE TEAM

DIRECTOR - Fadi Skeiker
PRODUCTION MANAGER - Lindsay Krieg
LIGHTING DESIGNER - Larry Barnes
STAGE MANAGER - Audrey Gregory
SET DESIGNER - Chris Haig
SOUND DESIGNER - Damien Figueras
MASTER ELECTRICIAN - Troy Martin O'Sha
TECHNICAL DIRECTOR - Matt Groeneveld

DRAWN BY

LARRY BARNES 617-331-5866
larrybarnesdesign@gmail.com

CONTEXT

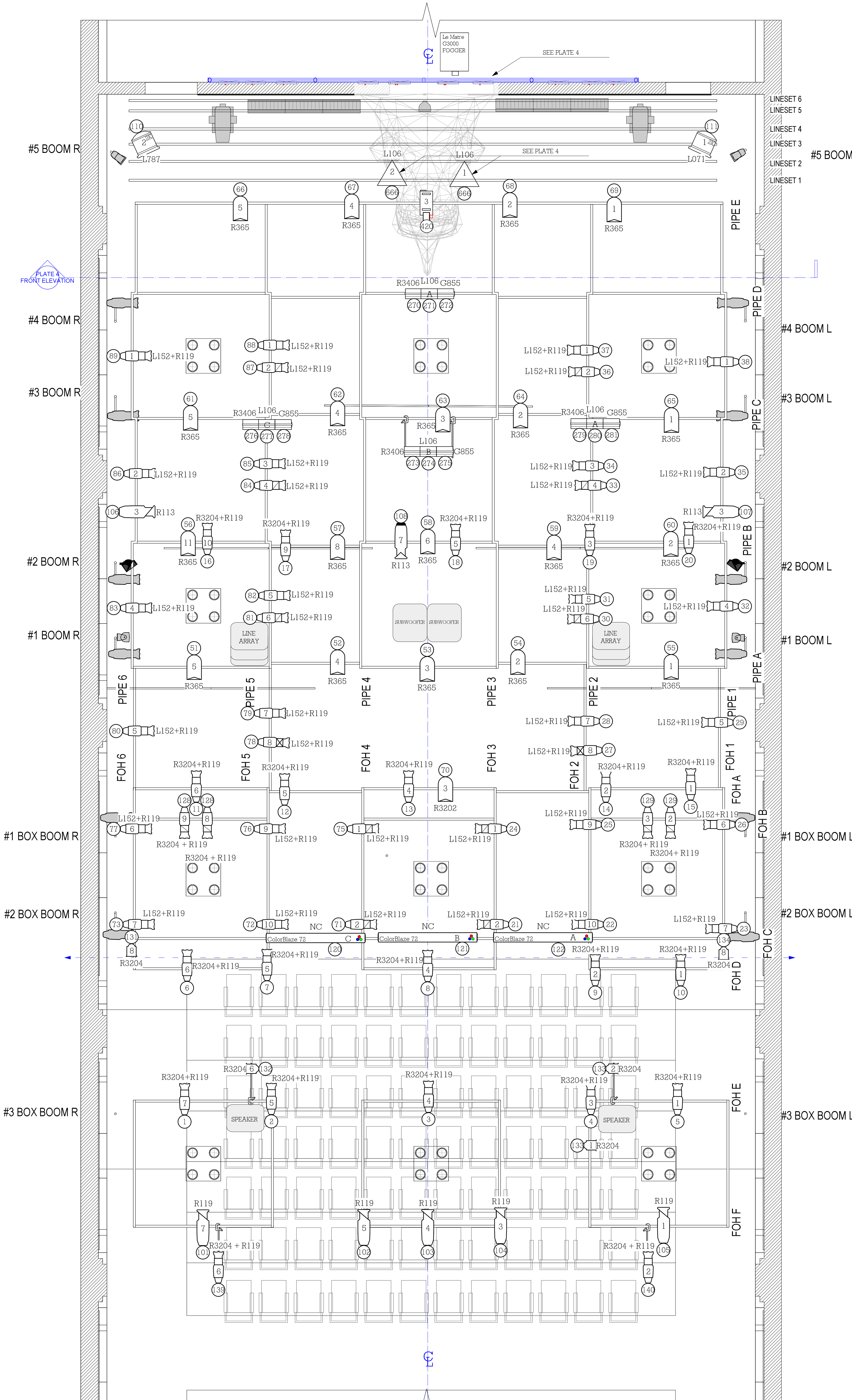
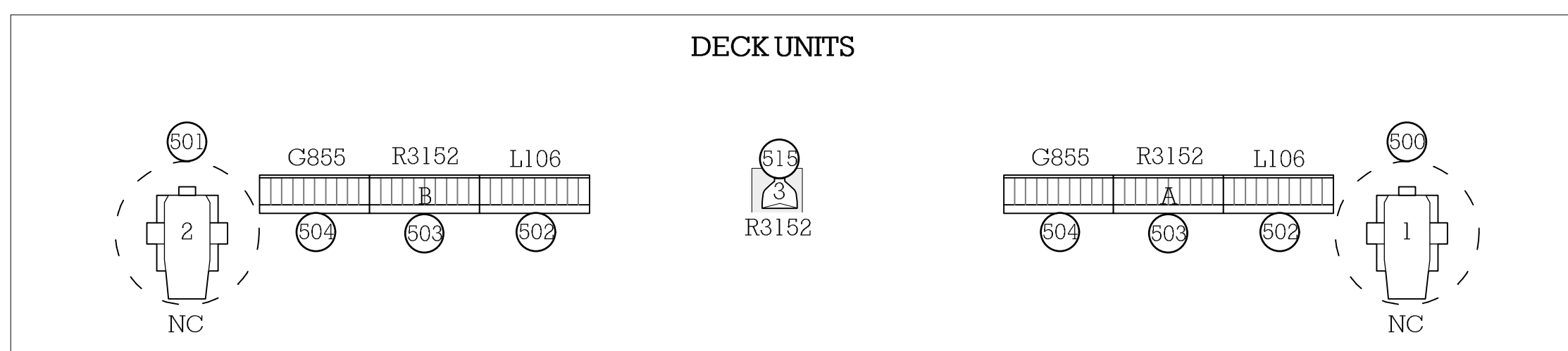
PAGE 1: LIGHT PLOT
PAGE 2: LIGHTING SECTION
PAGE 3: BOOM PLATE
PAGE 4: FRONT ELEVATION

PLATE

LIGHT PLOT

01 OF: 04

SCALE: 3/8" = 1'-0" VERSION
PRINT SIZE: 24 X 36 ARCH D 02 OF: 02
DATE: 04/02/2019

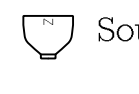







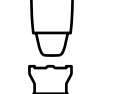
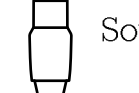

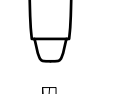
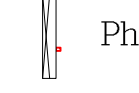
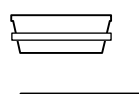


10 LIGHT PLOT Scale: 3/8" = 1'-0"


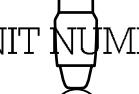

DISCLAIMER

This drawing represents visual concepts, suggested construction and fixture placement only! The Designer is not qualified to determine the structural or electrical appropriateness of this design and will not assume responsibility for improper engineering, construction, handling, or use. All materials and construction must comply with the most stringent applicable federal and local fire, safety energy and environmental codes. This drawing is intended for the mentioned production only any use of this design is forbidden without express written consent of the designer.

FIXTURES

-  Source 4 ParNel
575w
-  Source 4 Par WFL
575w
-  SeaChanger 26 Deg
750w
-  SeaChanger 50 Deg
750w
-  Source 4 19 Deg
575w
-  Source 4 26 Deg
575w
-  Source 4 36 Deg
575w
-  Source 4 50 Deg
575w
-  Philips iWhite
-  Martin Atomic 3K
-  ColorBlaze T2
-  Philips ColorBlaze T2
12 Channel Mode
-  Hui Cyc Light
-  Altman MR 16
5 Cell-3 Circuit - 6' 750w

LEGEND

-  COLOR
-  UNIT NUMBER
-  CHANNEL

VENUE

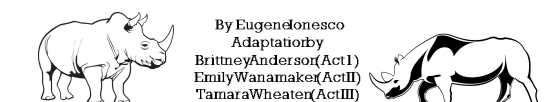
The Arts Bank

PRODUCER

UNIVERSITY OF THE Arts 

SHOW

RHINOCEROS



CREATIVE TEAM

DIRECTOR - Fadi Skeiker
 PRODUCTION MANAGER - Lindsay Krieg
 LIGHTING DESIGNER - Larry Barnes
 STAGE MANAGER - Audrey Gregory
 SET DESIGNER - Chris Haig
 SOUND DESIGNER - Damien Figueras
 MASTER ELECTRICIAN - Troy Martin O'Shea
 TECHNICAL DIRECTOR - Matt Groeneveld

DRAWN BY

LARRY BARNES

CONTEXT

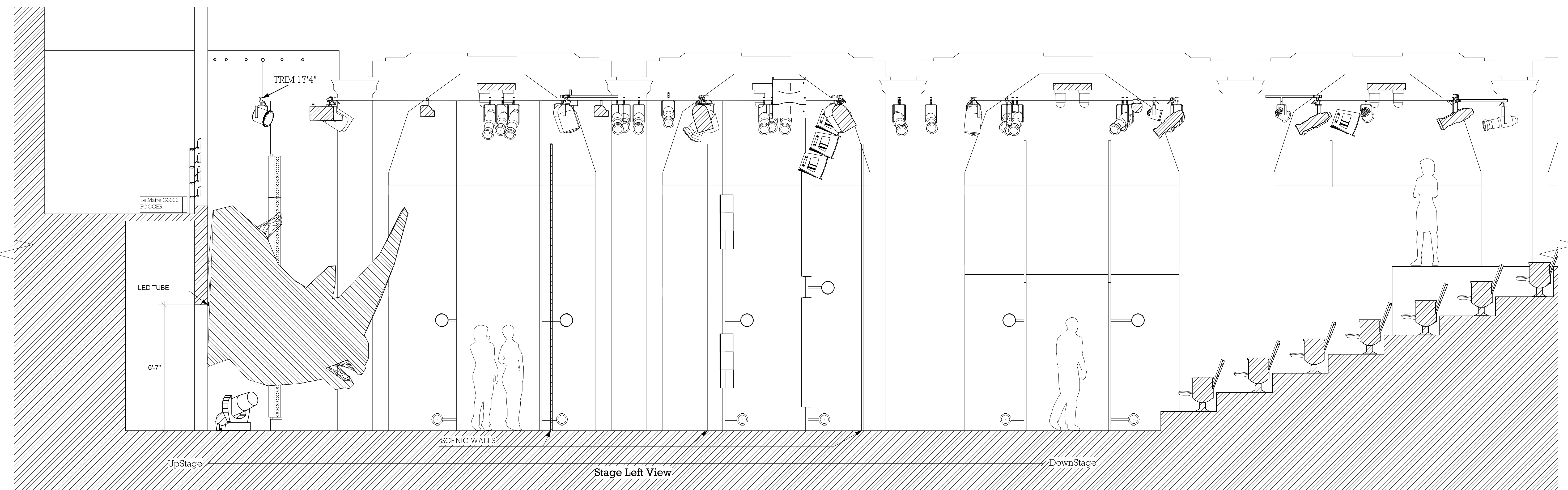
- PAGE 1: LIGHT PLOT
- PAGE 2: LIGHTING SECTION
- PAGE 3: BOOM PLATE
- PAGE 4: FRONT ELEVATION

PLATE

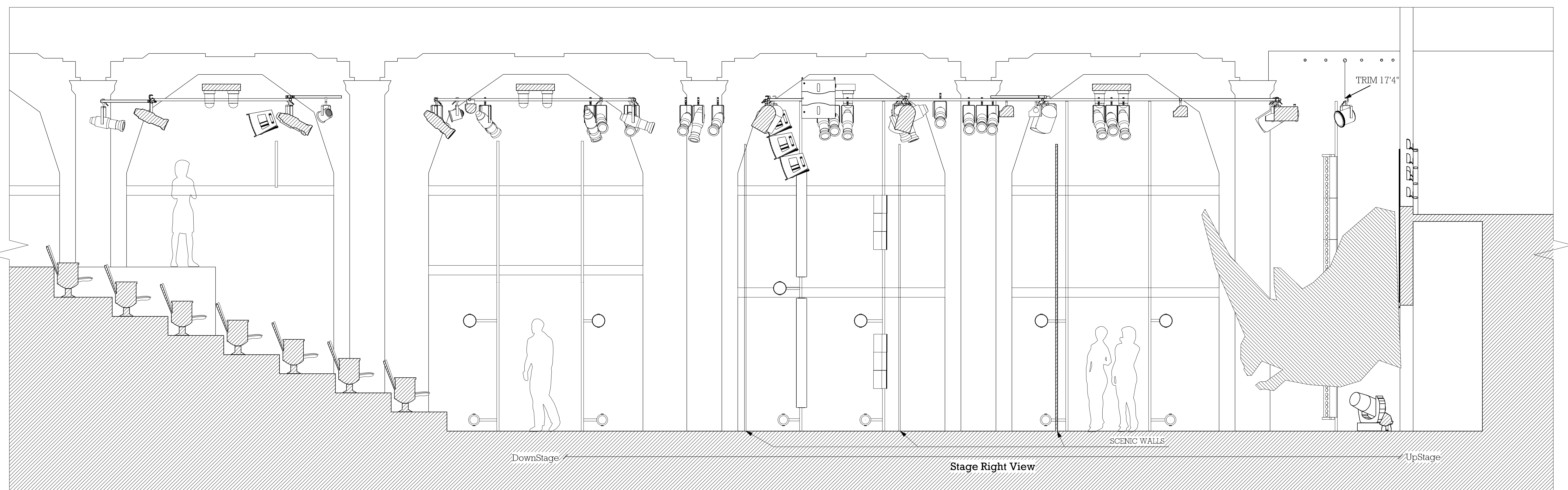
LIGHTING SECTION

02 OF 04

SCALE: 3/8" = 1'-0" VERSION
 PRINT SIZE: 24 X 36 ARCH D 02 OF 02
 DATE: 04/02/2019

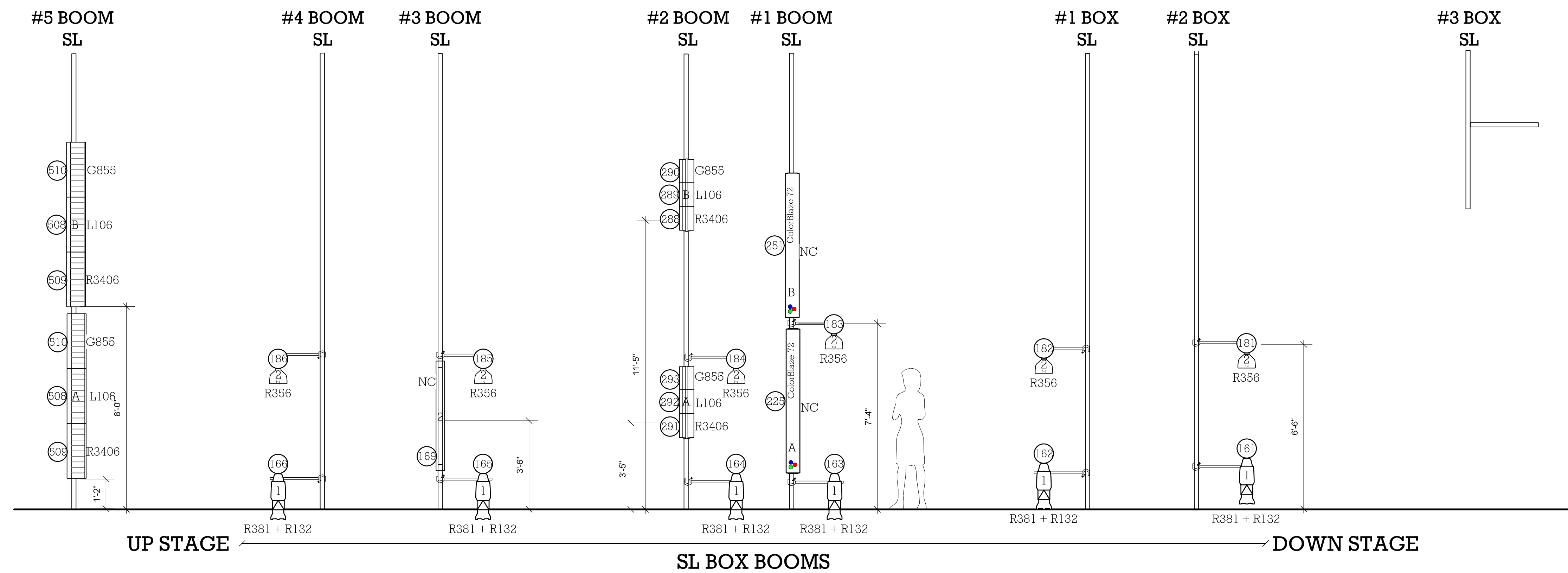
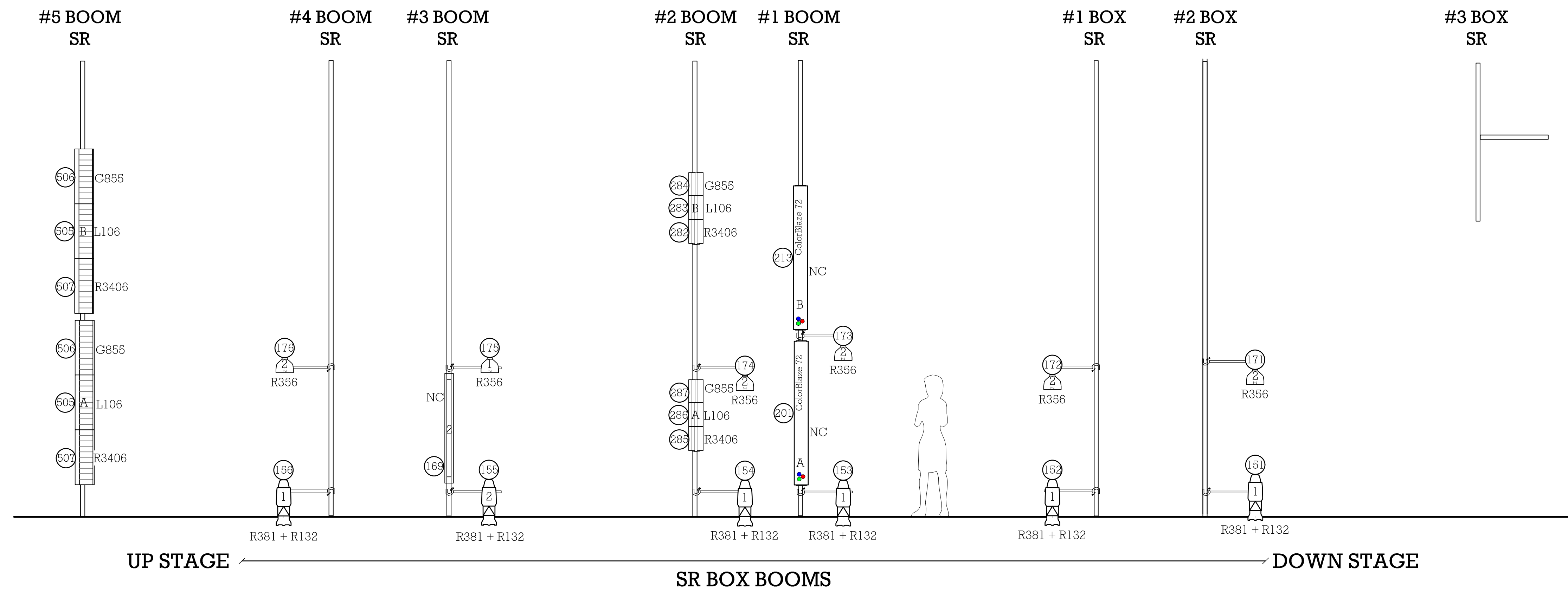


11 LIGHTING SECTION
 Scale: 3/8" = 1'-0"



1 LIGHTING SECTION
 Scale: 3/8" = 1'-0"

DISCLAIMER
 This drawing represents visual concepts, suggested construction and fixture placement only! The Designer is not qualified to determine the structural or electrical appropriateness of this design and will not assume responsibility for improper engineering, construction, handling, or use. All materials and construction must comply with the most stringent applicable federal and local fire, safety energy and environmental codes. This drawing is intended for the mentioned production only any use of this design is forbidden without express written consent of the designer.



12 BOOM PLATE
 Scale: 3/8" = 1'-0"

- FIXTURES**
- Source 4 ParNel 575w
 - Source 4 Par WFL 575w
 - SeaChanger 26 Deg 750w
 - SeaChanger 50 Deg 750w
 - Source 4 19 Deg 575w
 - Source 4 26 Deg 575w
 - Source 4 36 Deg 575w
 - Source 4 50 Deg 575w
 - Philips iWhite
 - Martin Atomic 3K
 - ColorBlaze 72
 - Philips ColorBlaze 72 12 Channel Mode
 - Hui Cyc Light
 - Altman MR 16 5 Cell-3 Circuit - 6' 750w
 - Black Light Fluorescent

LEGEND

COLOR
 UNIT NUMBER
 CHANNEL

VENUE
 The Arts Bank

PRODUCER
 UNIVERSITY OF THE Arts

SHOW
 RHINOCEROS

CREATIVE TEAM
 DIRECTOR - Fadi Skeiker
 PRODUCTION MANAGER - Lindsay Krieg
 LIGHTING DESIGNER - Larry Barnes
 STAGE MANAGER - Audrey Gregory
 SET DESIGNER - Chris Haig
 SOUND DESIGNER - Damien Figueras
 MASTER ELECTRICIAN - Troy Martin O'Shia
 TECHNICAL DIRECTOR - Matt Groeneveld

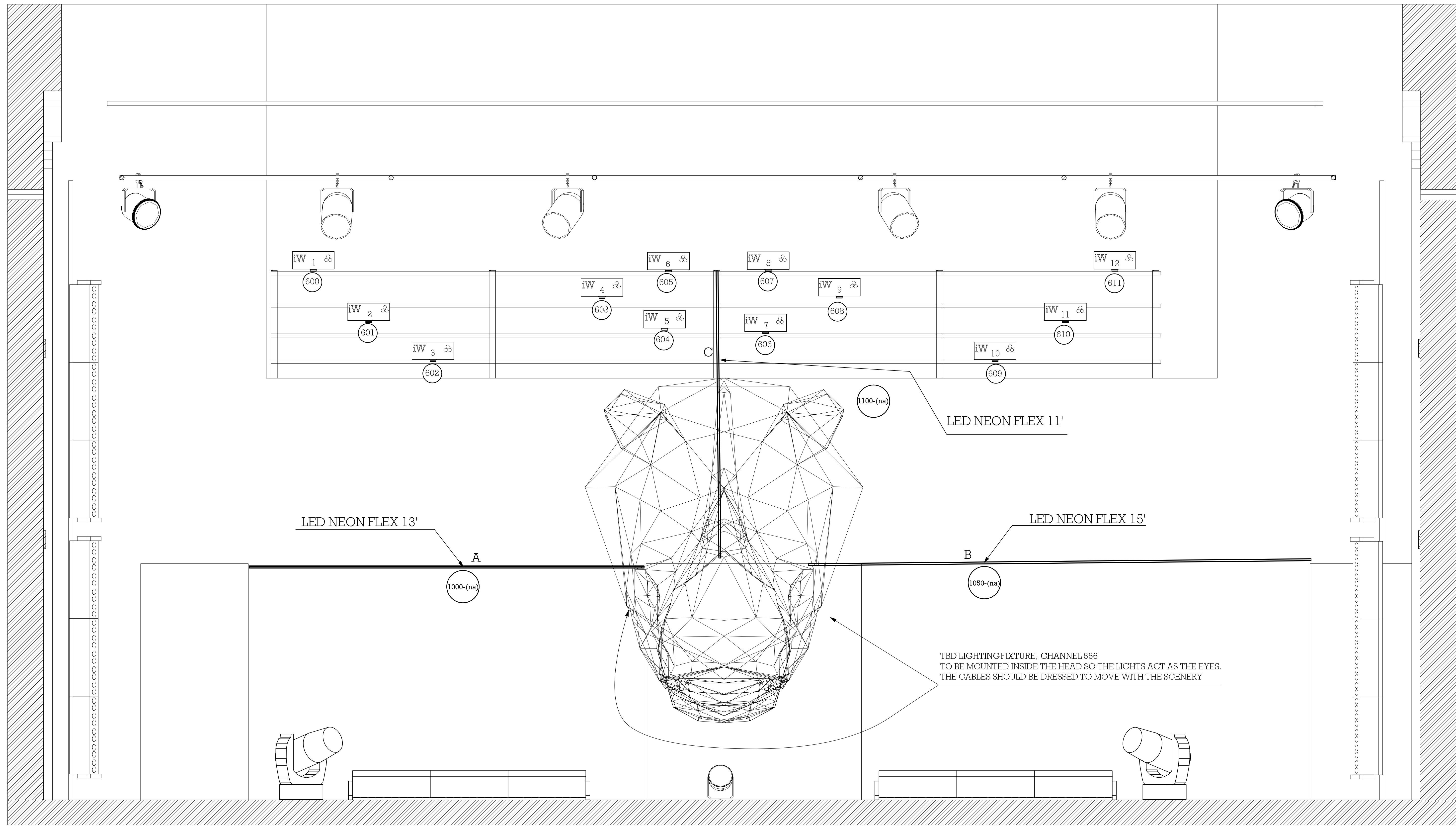
DRAWN BY
 LARRY BARNES

CONTEXT
 PAGE 1: LIGHT PLOT
 PAGE 2: LIGHTING SECTION
 PAGE 3: BOOM PLATE
 PAGE 4: FRONT ELEVATION

PLATE
 BOOM PLATE

03 OF 04

SCALE: 3/8" = 1'-0"
 PRINT SIZE: 24 X 36 ARCH D
 DATE: 04/02/2019
 VERSION 02 OF 02



4 FRONT ELEVATION
Scale: 3/4" = 1'-0"

Larry Barnes Design

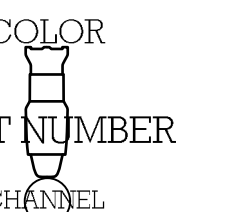
DISCLAIMER

This drawing represents visual concepts, suggested construction and fixture placement only! The Designer is not qualified to determine the structural or electrical appropriateness of this design and will not assume responsibility for improper engineering, construction, handling, or use. All materials and construction must comply with the most stringent applicable federal and local fire, safety energy and environmental codes. This drawing is intended for the mentioned production only any use of this design is forbidden without express written consent of the designer.

FIXTURES

- Source 4 ParNel 575w
- Source 4 Par WFL 575w
- SeaChanger 26 Deg 750w
- SeaChanger 50 Deg 750w
- Source 4 19 Deg 575w
- Source 4 26 Deg 575w
- Source 4 36 Deg 575w
- Source 4 50 Deg 575w
- Philips iWhite
- Martin Atomic 3K
- ColorBlaze 72
- Philips ColorBlaze 72 12 Channel Mode
- Hui Cyc Light
- Altman MR 16 5 Cell-3 Circuit-6' 750w

LEGEND



VENUE

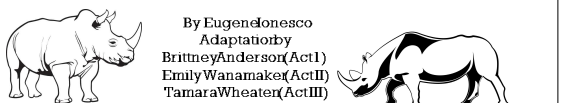
The Arts Bank

PRODUCER

UNIVERSITY OF THE **Arts**

SHOW

RHINOCEROS



CREATIVE TEAM

- DIRECTOR - Fadi Skelker
- PRODUCTION MANAGER - Lindsay Krieg
- LIGHTING DESIGNER - Larry Barnes
- STAGE MANAGER - Audrey Gregory
- SET DESIGNER - Chris Haig
- SOUND DESIGNER - Damien Figueras
- MASTER ELECTRICIAN - Troy Martin O'Shea
- TECHNICAL DIRECTOR - Matt Groenewald

DRAWN BY

LARRY BARNES

CONTEXT

- PAGE 1: LIGHT PLOT
- PAGE 2: LIGHTING SECTION
- PAGE 3: BOOM PLATE
- PAGE 4: FRONT ELEVATION

PLATE

FRONT ELEVATION

04 OF: 04